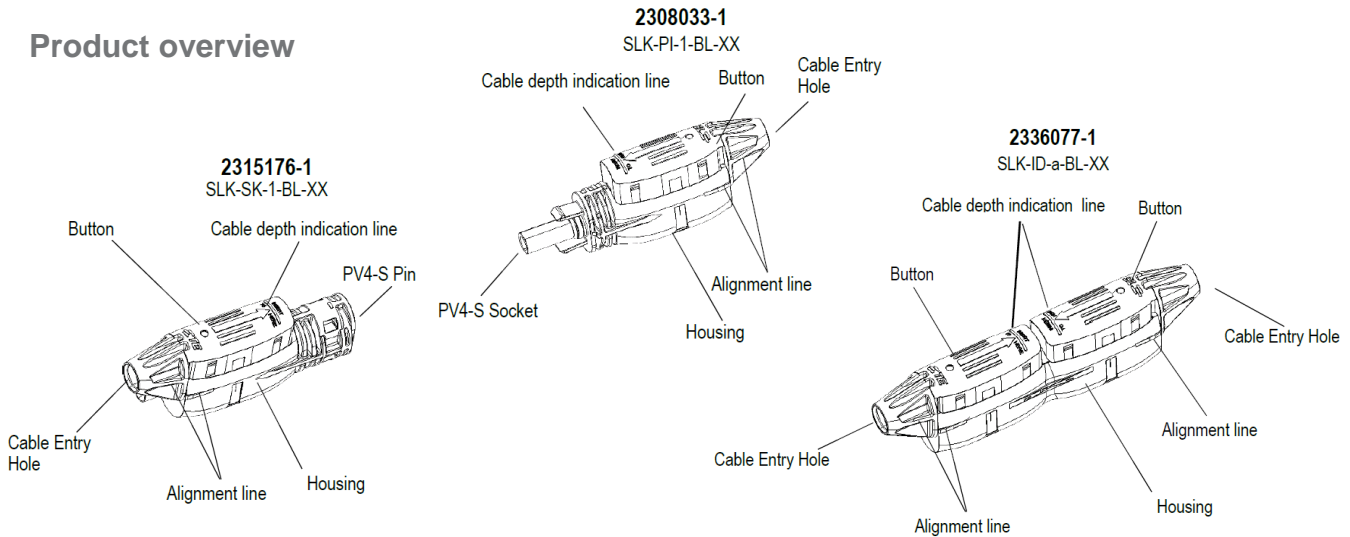


# SLK 2.0 Technical Datasheet

## Product overview



## Installation notes

- Do not disconnect under load: PV plug connections must not be disconnected while under load
- For copper stranded wire only, see ratings section for suitable wire type
- Product is certified by UL: UL file E353372 (Pin and Socket), UL file E13288 (Splice)
- Installation shall be in accordance with CSA C22.1: Safety Standard for Electrical Installations, Canadian Electrical Code, Part 1
- For de-latching operation, please refer to TE Connectivity Application Specification 114-133104

## Product ratings

Part Number	Name	Cable range*	Model code	Voltage	Current	Temperature
2308033-1	SOLARLOK 2.0 Socket connector	2.5 mm <sup>2</sup> to 6 mm <sup>2</sup> 14 AWG to 10 AWG	SLK-SK-1-BL-XX	1500 V dc (IEC and UL)	<b>IEC rating:</b> 30 A for 2.5 mm <sup>2</sup> 35 A for 4.0 mm <sup>2</sup> 40 A for 6.0 mm <sup>2</sup>  <b>UL rating:</b> 15 A for 14 AWG 20 A for 12 AWG 30 A for 10 AWG	-40 °C to +85 °C (ambient for IEC and UL)
2315176-1	SOLARLOK 2.0 Pin connector		SLK-PI-1-BL-XX			
2336077-1	Solarlok 2.0 Splice		SLK-ID-a-BL-XX			

\*For UL cable with an outside diameter of 5.9 mm to 7.2 mm are permissible.

\*For TÜV the following cables have been approved in combination with the SOLARLOK 2.0:

- TE cable PN 2328394, 2.5 mm<sup>2</sup> (14 AWG)
- TE cable PN 2270245, 4mm<sup>2</sup> (12 AWG)
- TE cable PN 2270260, 4mm<sup>2</sup> (12 AWG)
- TE cable PN 2328400, 6mm<sup>2</sup> (10 AWG)
- TE cable PN 2270215, 4mm<sup>2</sup> (12 AWG)
- TE cable PN 2270259, 4mm<sup>2</sup> (12 AWG)
- Byson 6351D, 2.5 mm<sup>2</sup> (14 AWG)
- Byson 6352D, 4 mm<sup>2</sup> (12 AWG)
- Byson 6353D, 6 mm<sup>2</sup> (10 AWG)
- Honglin 4 mm<sup>2</sup> (12 AWG)

\*additional cables with an outside diameter of 5.5 mm up to 5.9 are under certification approval

# SLK 2.0 Connector Termination Instructions

## TE Preferred tools

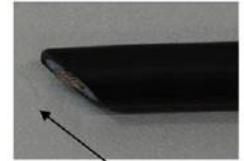
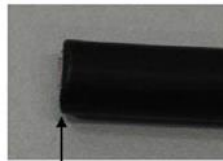


## Recommended tools



### 1 Cable selection and preparation

Check industry standard solar cable diameter to be 5.9 to 7.2 mm range with TE delatching tool PN 2342988-1



### 2 Cable insertion procedure

Straighten and clean cable. Set cable insertion length by indicator with thumb (53.8 mm or 2.125 in). Keep thumb location on cable during insertion until thumb hits cable entry hole



If cable insertion is not going smoothly (false stop, finger not at cable insertion hole), slightly rotate the cable in both directions will overcome this.

### 3 Termination

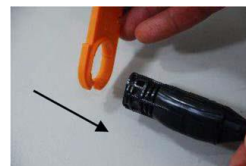


In one smooth motion

Note: For terminations with 10 AWG cable, a small gap between the housing and the button parts can be visible, with no impact on performances

### 4 Go – No Go check

Check for correct termination with TE de-latching tool P/N 2342988-1 by sliding connector through opening. If connector does not slide through opening, close button further with tool and re-check



The closed height of the connector is 26.3 mm or check the lines on the side of the connector for alignment

